

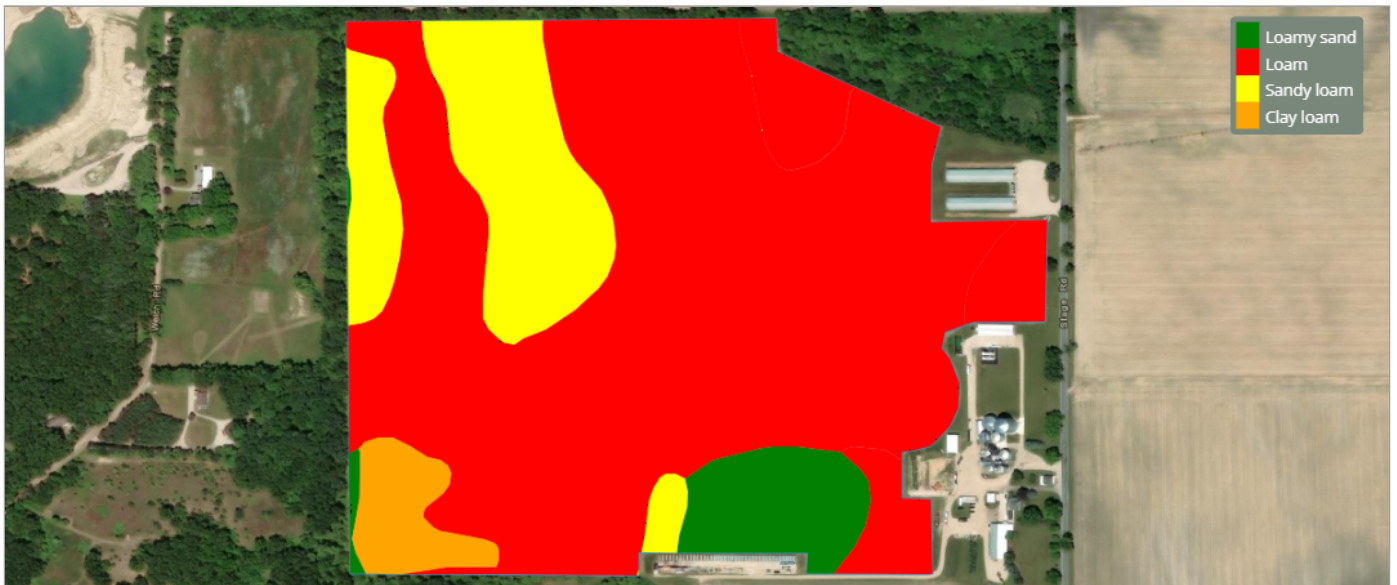
Product Trial Report

GROWER DETAILS	FIELD DETAILS	PLANTING/HARVEST DETAILS	Total Acre Final Report
Grower:	Total Acres: 97.56	Crop: Soybean	Report Date: 10/24/2025
City & State: Ionia, MI	Soil Type: Please see Soil Type Map	Plant Date: 04/23/2025	Harvest Year: 2025
Zip Code: 48846	Tile: Spot Tile	Row Spacing: 15"	Crop: Soybean
	Irrigation: Pivot	Planting Depth: 1.25	Trial Name: EXP-992 Soybean
	Fall Tillage: Vertical/Min Till	Harvest Date: 10/17/2025	Trial Type: Post Herbicide & R1-R3 Fungicide Pass
	Spring Tillage: Vertical/Min Till	Variety: P28Z89E	Product Name: Growth Supplement 30"
	Previous Crop: Corn	Seed Company: Pioneer	
		Population: 128400	

Field Map



Soil Type



Product Trial Report

Planting Map

No Data Found

Trial Zones



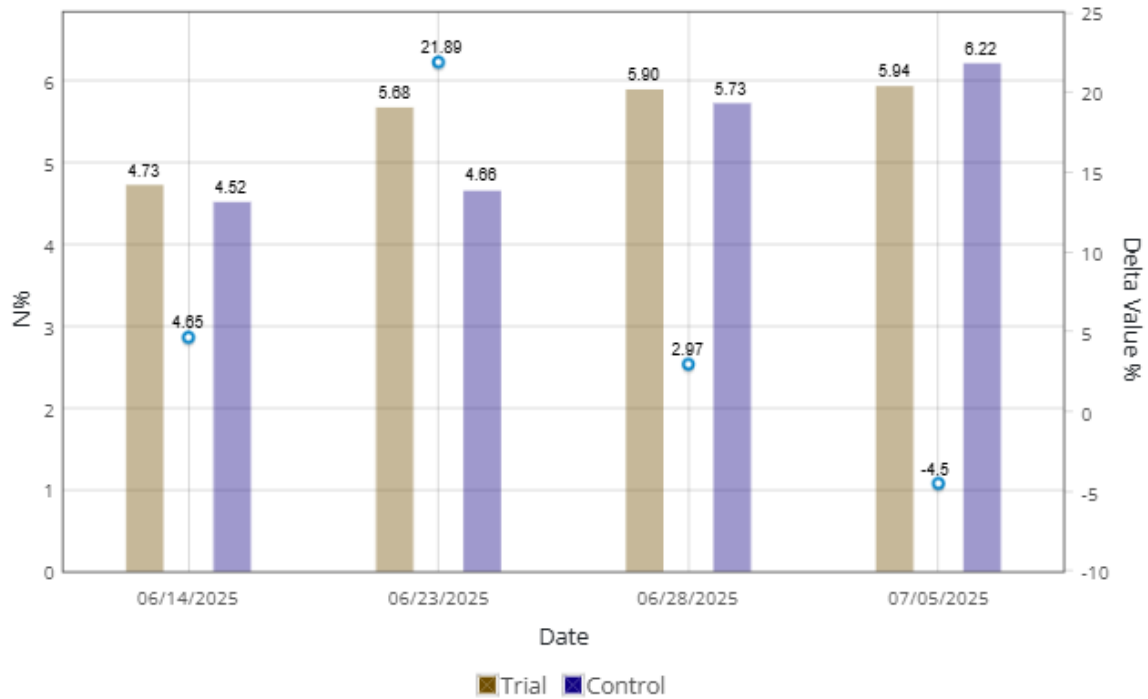
Product Trial Report

Tissue Results Data

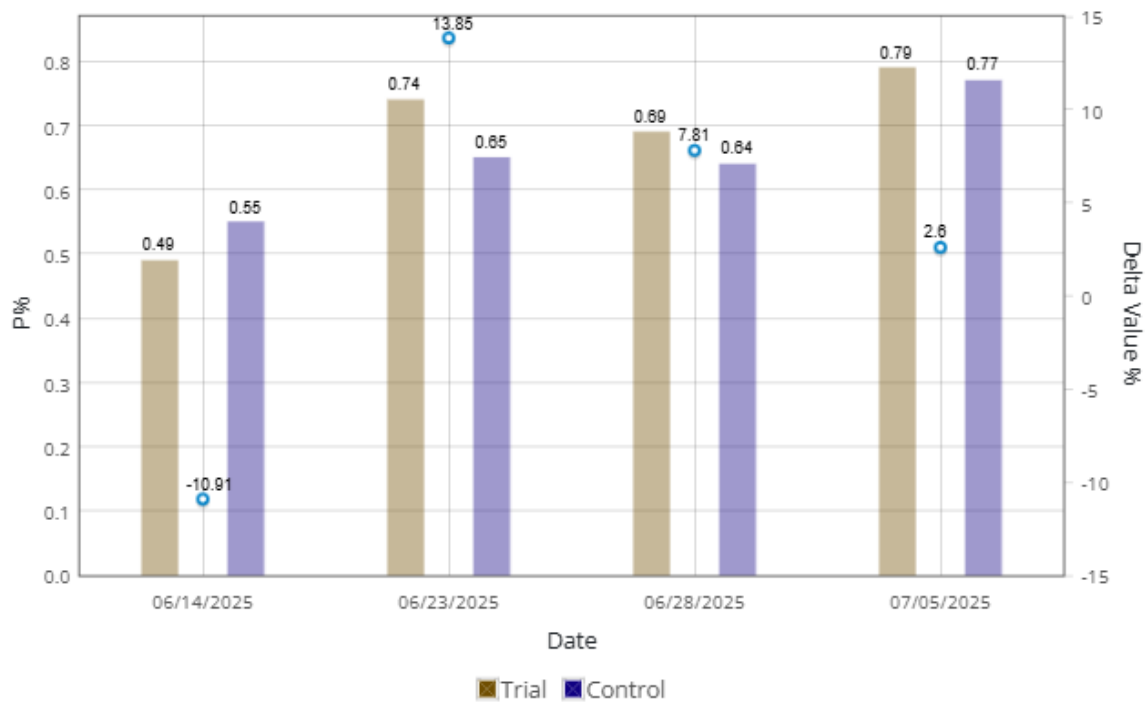
Date	GDU	Water	Tissue Site	Nitrogen	Phosphorus	Potassium	Magnesium	Calcium	Sulfur	Zinc	Manganese	Copper	Iron	Boron	Aluminum	Molybdenum	Sodium
06/14/2025	564		EXP-992	4.73 %	0.49 %	2.36 %	0.45 %	1.05 %	0.29 %	43.37 ppm	62.75 ppm	8.19 ppm	182.65 ppm	34.78 ppm		1.43 ppm	0.15 ppm
			Control	4.52 %	0.55 %	2.08 %	0.45 %	1.08 %	0.31 %	52.99 ppm	62.83 ppm	9.7 ppm	167.15 ppm	37.84 ppm		1.58 ppm	0.33 ppm
06/23/2025	783	1.4 in	EXP-992	5.68 %	0.74 %	3.44 %	0.6 %	1.06 %	0.34 %	50.78 ppm	67.12 ppm	11.22 ppm	125.38 ppm	47.99 ppm		1.02 ppm	0.23 ppm
			Control	4.66 %	0.65 %	3.08 %	0.51 %	0.96 %	0.32 %	50.46 ppm	67.81 ppm	10.11 ppm	117.13 ppm	42.64 ppm		1.39 ppm	0.22 ppm
06/28/2025	909	1.4 in	EXP-992	5.9 %	0.69 %	2.15 %	0.51 %	0.94 %	0.32 %	49.27 ppm	58.83 ppm	9.04 ppm	282.36 ppm	38.67 ppm		1.41 ppm	0.25 ppm
			Control	5.73 %	0.64 %	2.01 %	0.47 %	0.82 %	0.29 %	42.56 ppm	59.14 ppm	8.43 ppm	286.41 ppm	33.89 ppm		1.9 ppm	0.13 ppm
07/05/2025	1081	0.4 in	EXP-992	5.94 %	0.79 %	2.83 %	0.54 %	0.96 %	0.33 %	54.79 ppm	60.29 ppm	10.39 ppm	184.77 ppm	46.79 ppm		1.37 ppm	0.32 ppm
			Control	6.22 %	0.77 %	2.84 %	0.5 %	0.86 %	0.32 %	50.7 ppm	63.98 ppm	9.89 ppm	134.09 ppm	44.4 ppm		1.03 ppm	0.26 ppm

Product Trial Report

Tissue Sample Comparison - Nitrogen

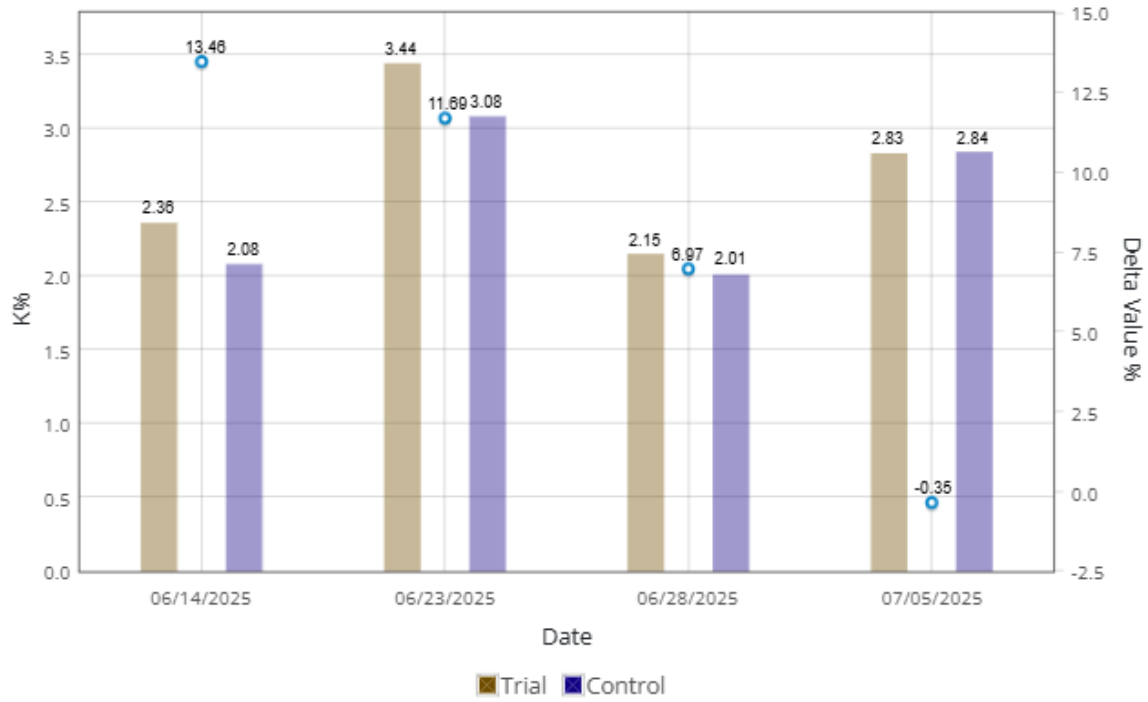


Tissue Sample Comparison - Phosphorus

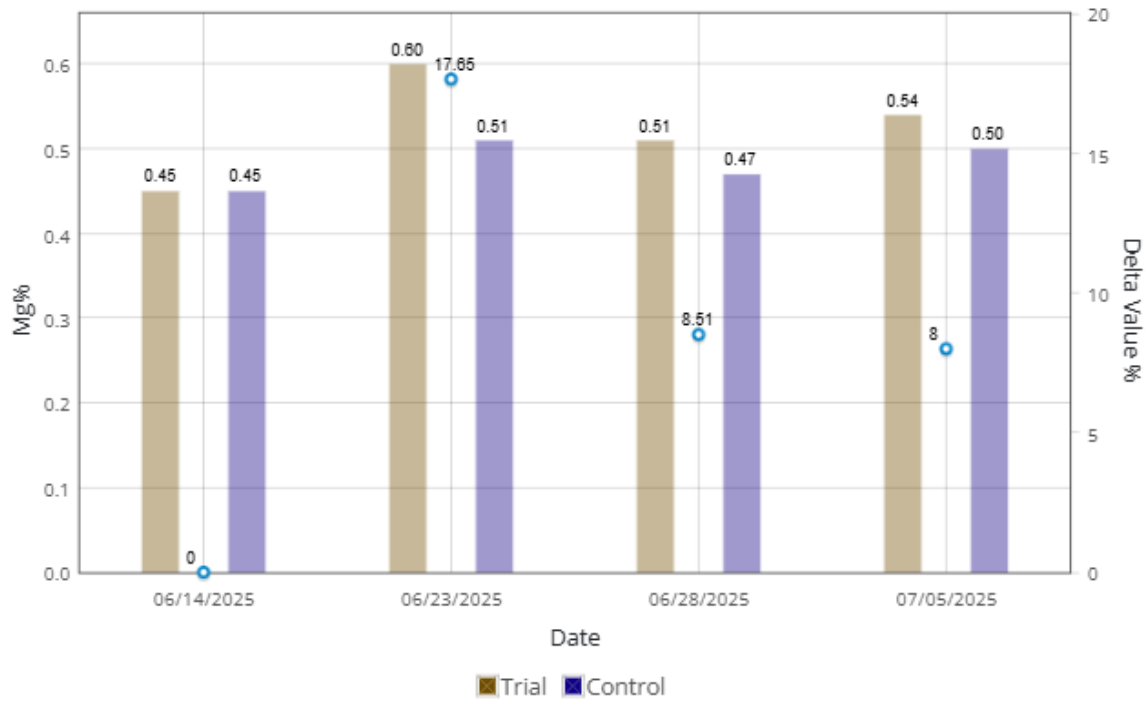


Product Trial Report

Tissue Sample Comparison - Potassium

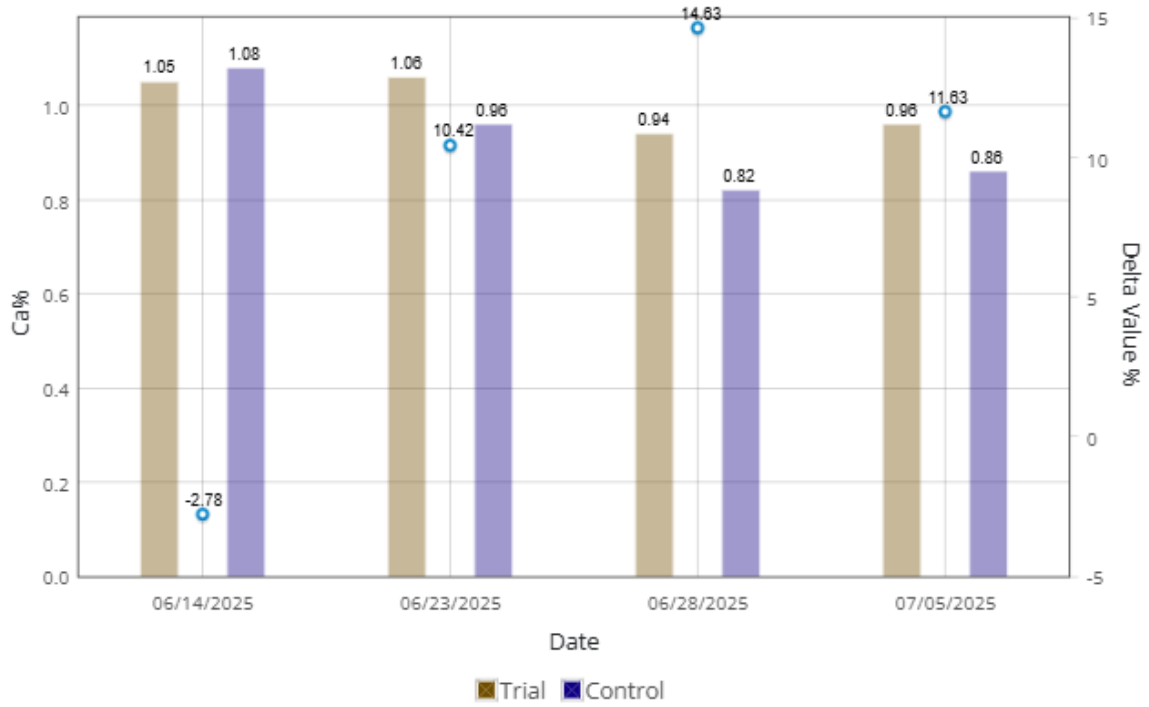


Tissue Sample Comparison - Magnesium

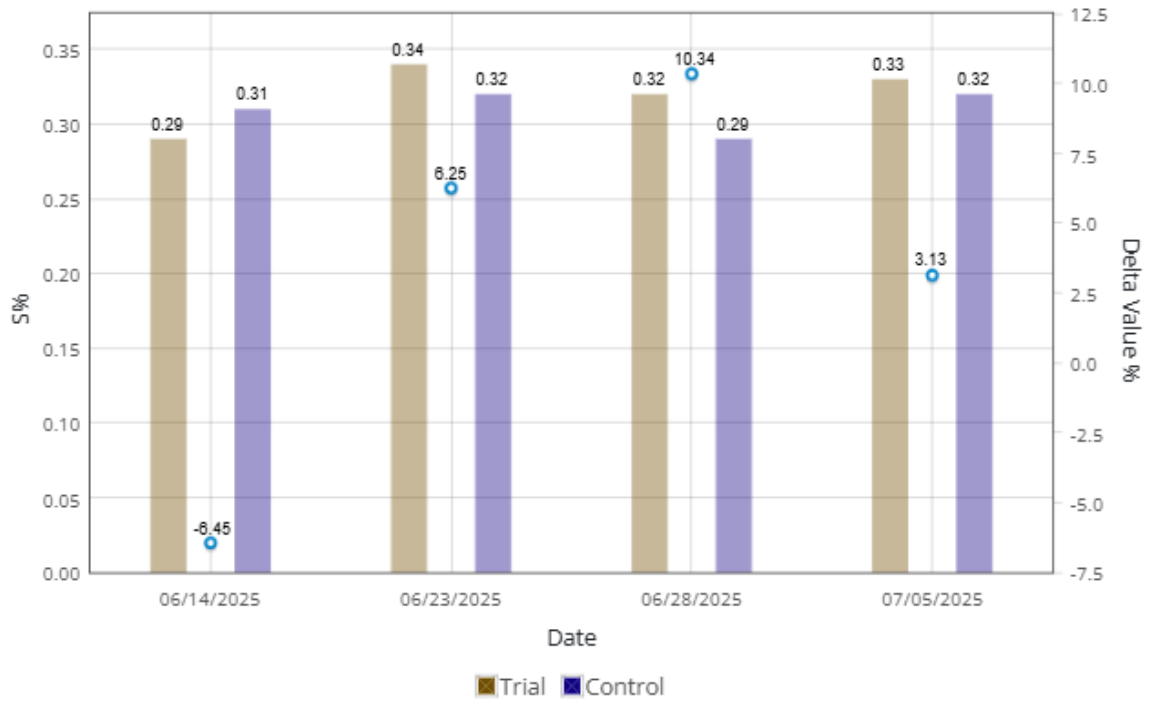


Product Trial Report

Tissue Sample Comparison - Calcium

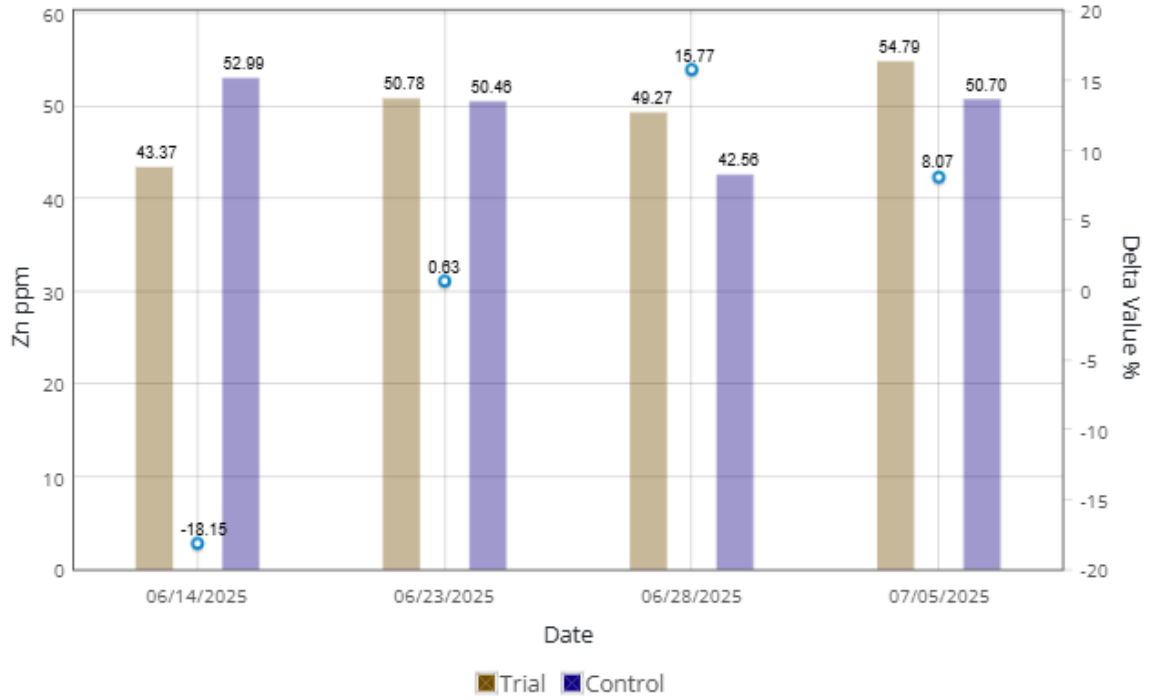


Tissue Sample Comparison - Sulfur

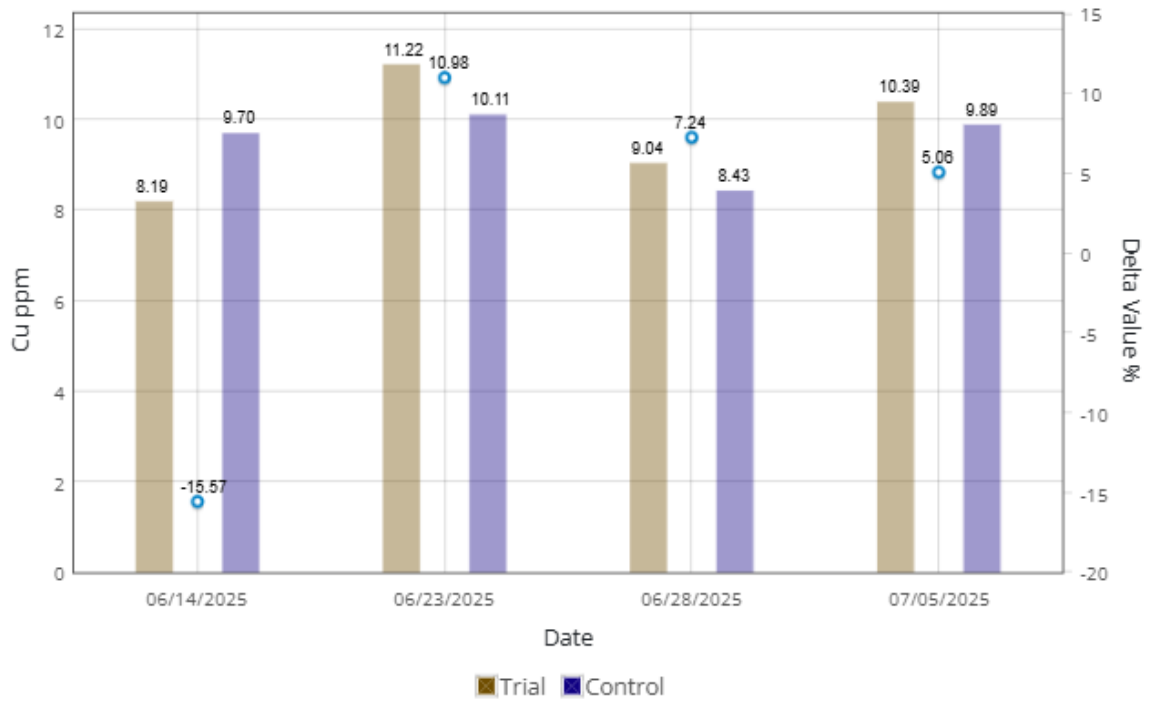


Product Trial Report

Tissue Sample Comparison - Zinc

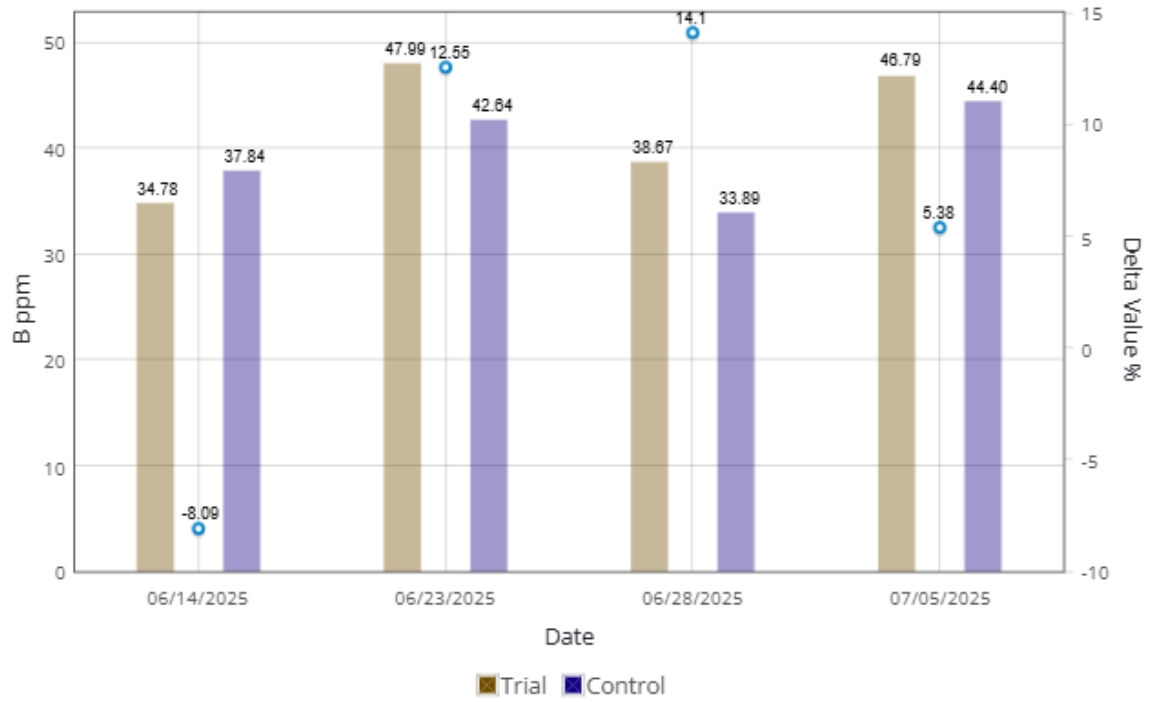


Tissue Sample Comparison - Copper



Product Trial Report

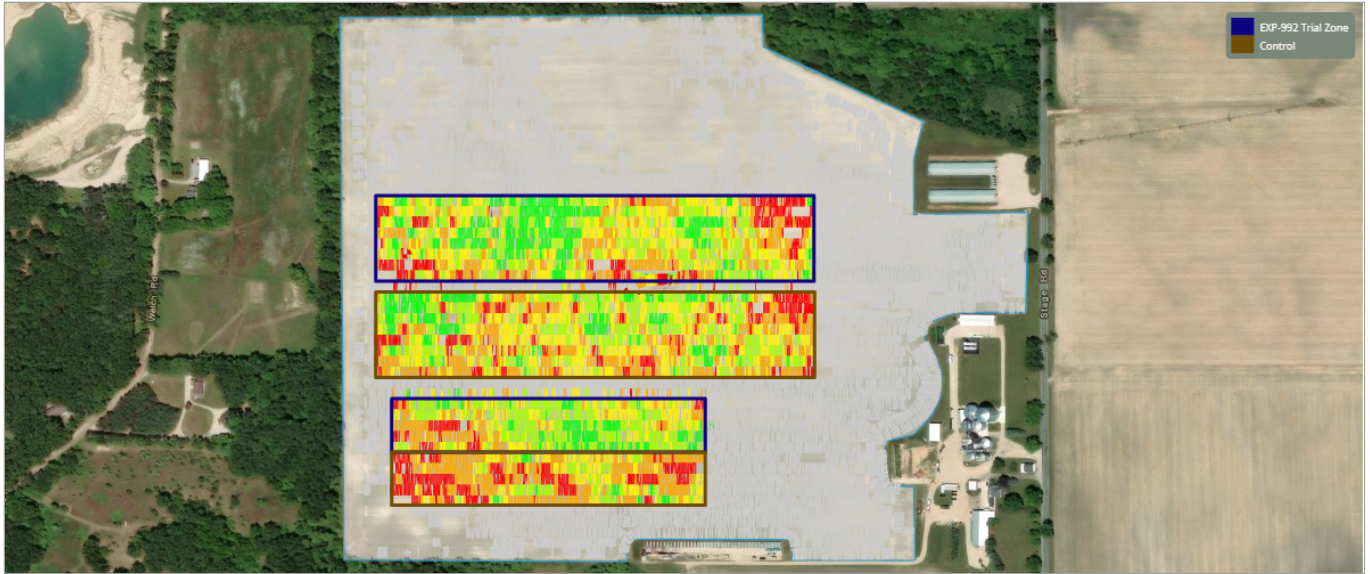
Tissue Sample Comparison - Boron



Product Trial Report

Yield Results Data

High Level Yield Heat Map



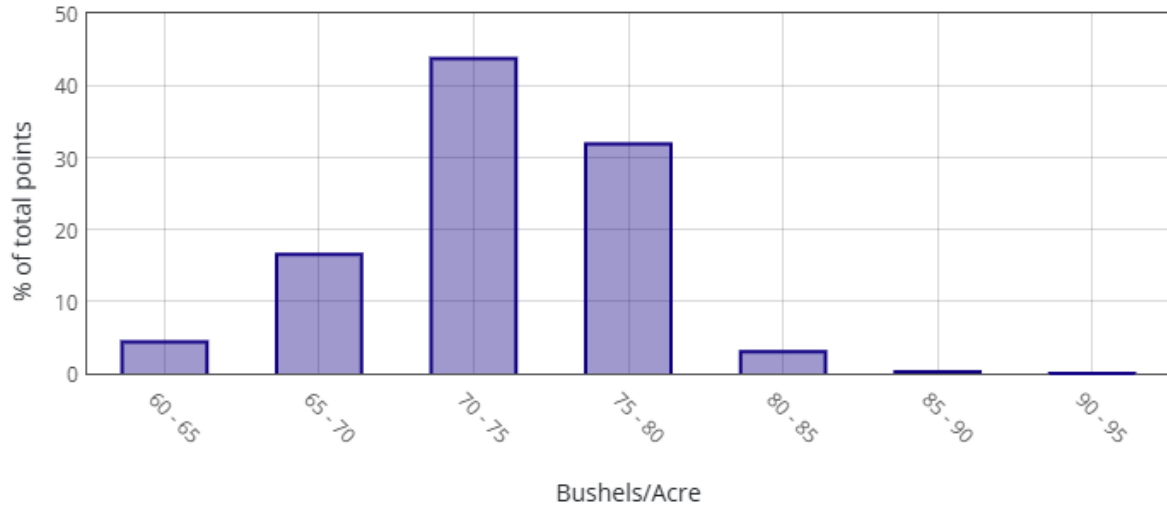
This data was filtered based on $-0.5 / +2$ St Dev

Yield Summary BPA	
<i>Location</i>	<i>Yield</i>
EXP-992 Trial Zone	73.32
Control	71.46
Yield Response	1.86

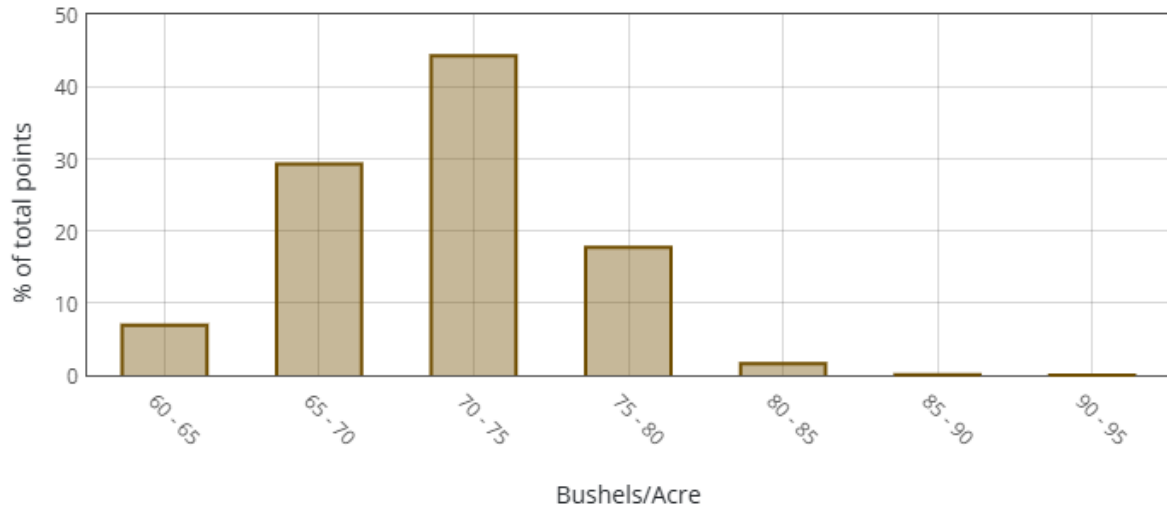
Yield Values	
●	61.2 - 67.1
●	67.1 - 71.2
●	71.2 - 73.8
●	73.8 - 76.9
●	76.9 - 92.2

Product Trial Report

EXP-992 Trial Zone

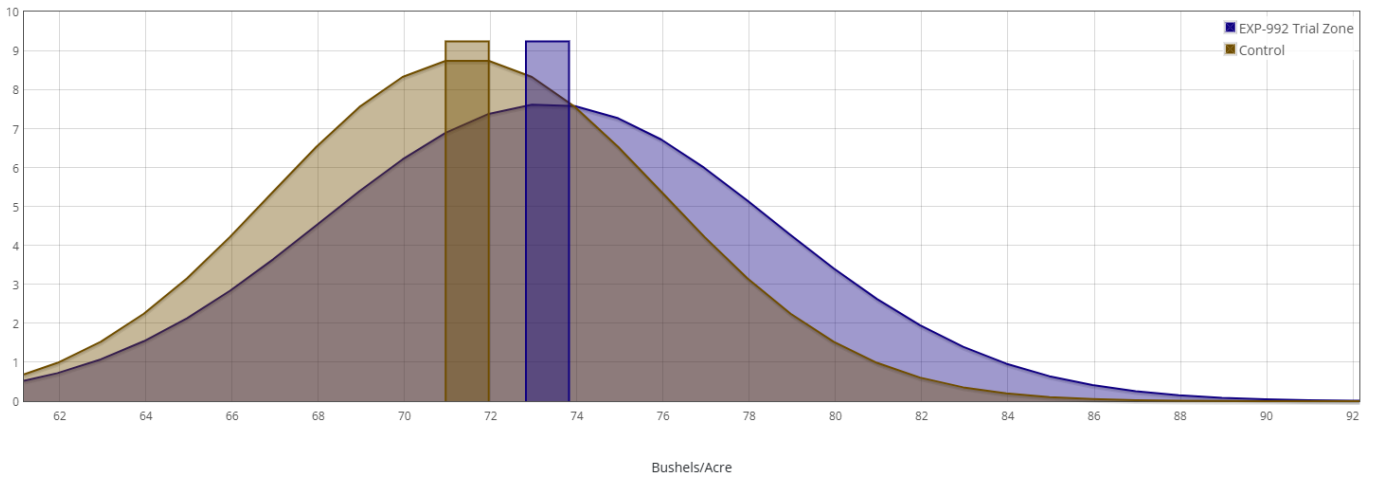


Control



Product Trial Report

Normal Curve Distribution



Product Trial Report

Product Trial Comments:

- This trial had a +1.86 bu./acre yield response using the -0.5/+2 Standard Deviation measurement method to eliminate erroneous yield data points
- Excellent nutrient uptake improvements in 9 of the nutrients measured with tissue sampling for this study
- The Delta Value %'s for each tissue sample comparison is the number between the Trial & Control bar graph
- Planter mapping capability was not available for this study. Confirmed with trial cooperators that the same variety was planted across the entire plot.
- The trial cooperators reported white mold pressure for this plot which led to a projected 30% yield loss

Application Date and Details:

• Application Date and Details:

Post Herbicide Application

- **Application Date:** 6/14/2025,
- **Growth Stage:** V4
- **Application Method:** Sprayer Broadcast
- **Product Application Rate/Acre:** EXP-992 = 10 oz.
- **Tank Mix Rate/Acre:** 20 Gallons

R1-R3 Fungicide Application

- **Application Date:** 6/29/2025
- **Growth Stage:** R1
- **Application Method:** Sprayer Broadcast
- **Product Application Rate/Acre:** EXP-922 = 10 oz.
- **Tank Mix Rate/Acre:** 20 Gallons
- **Additional Details:** Revytek was applied at 8 oz./acre in this tank mix

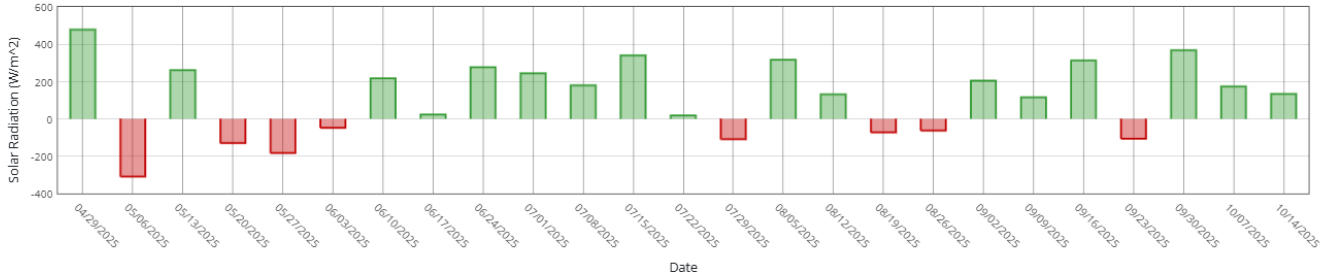
Product Trial Report

Trial Location Weather Data vs 5 Yr Avg

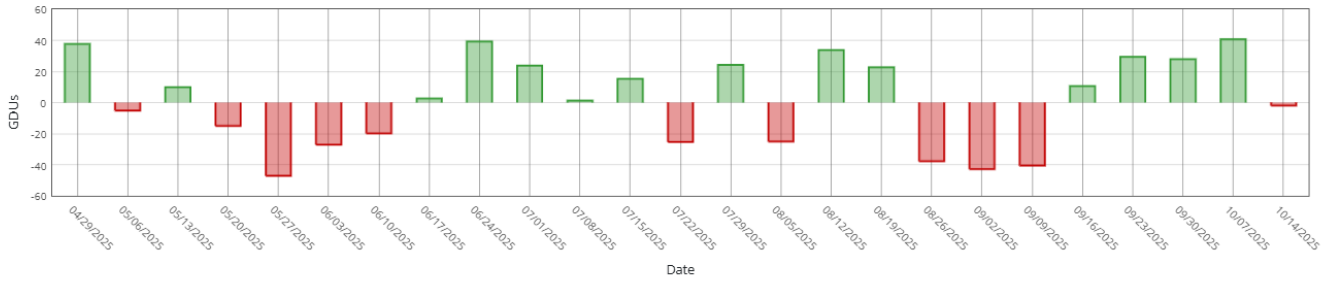
Historical Averages based on past years

Cumulative Week over Week

Sunlight



Heat (GDUs)



Rain

